

Press release

New EJOT® Pro-Line profiles expand product portfolio

Profiles for high-quality plaster connections

Bad Laasphe,
01/10/2020

Author:
Sophia Hoffmeister

Number of characters:
2,069 (incl. blanks)

With the new Pro-Line profiles, EJOT is introducing a comprehensive product portfolio for connection and plastering profiles which includes high-quality product solutions for different application areas. The products ensure the exact formation of plaster connections in ETIC systems.

New technology enables optimum movement absorption

The two reveal beads with mesh EJOT Pro GAP Active Flex and Giga Flex are in the focus of the new product range. They represent the transition between the facade surface and building openings such as windows and doors. Different movements of the plaster shell and the window occur at these connections, for example due to temperature-related effects. These movements have to be taken up by the profiles in order to enable a permanent, driving-rain-tight connection of the components. However, as the thickness of the thermal insulation composite system increases, the windows move further and further out into the insulation level. Here, a higher load automatically causes more movement, which the profiles have to withstand. The products can permanently absorb three-dimensional movements occurring at component transitions and meet the increased demands on profiles in Germany.

Comprehensive system accessories - everything from a single source

The Pro-Line profiles are produced with high-quality raw materials and state-of-the-art production technology. This guarantees a high product quality as well as a long service life of the profiles. With the three areas of fastening solutions for ETICS, assembly elements for attachments and profiles combined with a comprehensive range of advice and services, EJOT offers an extensive complete package for external thermal insulation composite systems. This includes cross-trade advice as well as comprehensive on-site service. EJOT is thus competently positioned for a wide variety of ETICS applications. Further information about the new Pro-Line profiles can be found at www.ejot-proline.de.

About EJOT®

With the Construction Division, the fastening technology specialist EJOT caters to selected segments of the building industry. This includes professional applications on building facades and installation solutions for technical facilities inside the building. The main products are drilling and sealing screws, nylon anchors, assembly elements for attachments, profiles, chemical and mechanical anchors as well as fasteners for flat roofs and solar applications. Whether it is the construction of the highest tower, the most spectacular nuclear reactor protective cover or the southernmost polar station in the world – EJOT customers rely on many years of experience in the building industry. EJOT – with over 3,500 employees in 36 subsidiaries, more than 24,000 products and almost one hundred years of company history.

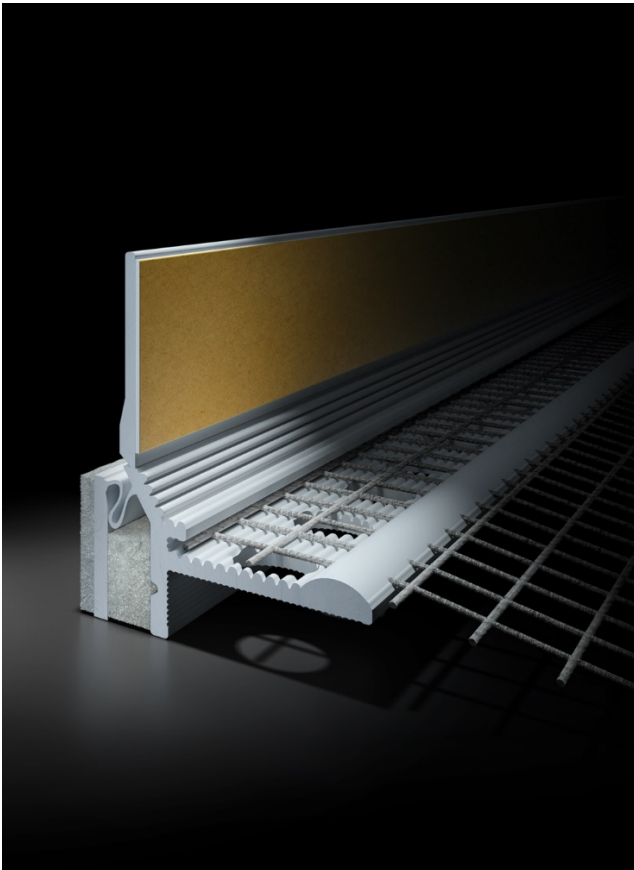
www.ejot.com

Captions:



Picture 1:

EJOT Pro-Line profiles for high-quality plaster connections



Picture 2:

The diaphragm technology of the reveal bead with mesh EJOT Pro GAP Flex - 10 mm enables an even higher three-dimensional movement for the highest requirements

Press contact:

EJOT Baubefestigungen GmbH

Sophia Hoffmeister
Content Marketing Managerin
In der Stockwiese 35
57334 Bad Laasphe
Germany

SHoffmeister@ejot.com
T +49 2752 908-7992
www.ejot.com