

# Certificate

## Certified Passive House component

for cool, temperate climate, valid until 31.12.2023

Category: **Facade anchor**  
 Manufacturer: **EJOT Austria GmbH & Co KG**  
**Voitsberg, Österreich**  
 Product name: **CROSSFIX claw**

The following criteria were used in awarding this certificate:

### Efficiency Criterion

In a typical application\*, the construction fulfills the requirements of

$$\text{Eff. fa} \leq 0.200 \text{ W/(kNK)}$$

### Comfort Criterion

The inner surface must be warm enough to prevent mold as well as uncomfortable down-drafts and radiation losses.

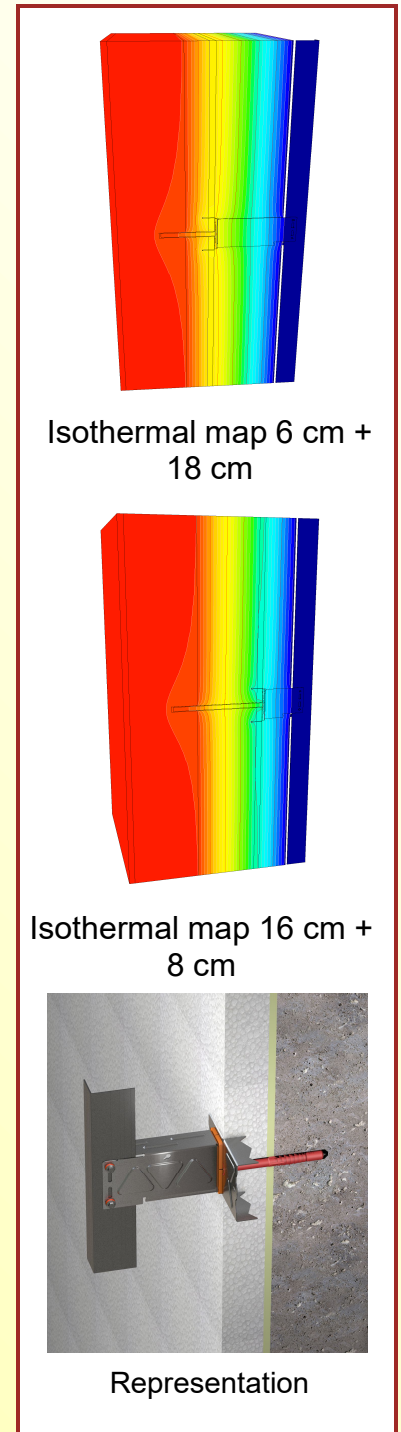
$$\theta_{i,\min} \geq 17^\circ\text{C}$$

### Thermal data of the certified component

CROSSFIX claw	Thermal bridge coefficient	Minimum interior surface temperature
	$\chi$ [W/K]	$\theta_{i,\min}$ [°C]
FP 6cm + 18 cm	0.0063	19.26
SP 6cm + 18 cm	0.0063	19.26
FP 16cm + 8 cm	0.0056	19.26
SP 16cm + 8 cm	0.0056	19,26

The system is used for the renovation; the details relate to the insulation thickness of the existing insulation as well as that of the additionally newly applied insulation.

\* The criterion has been validated with a representative facade of a school building



cool, temperate climate



**CERTIFIED COMPONENT**

Passive House Institute

# Data sheet

EJOT Austria GmbH & Co KG, CROSSFIX claw

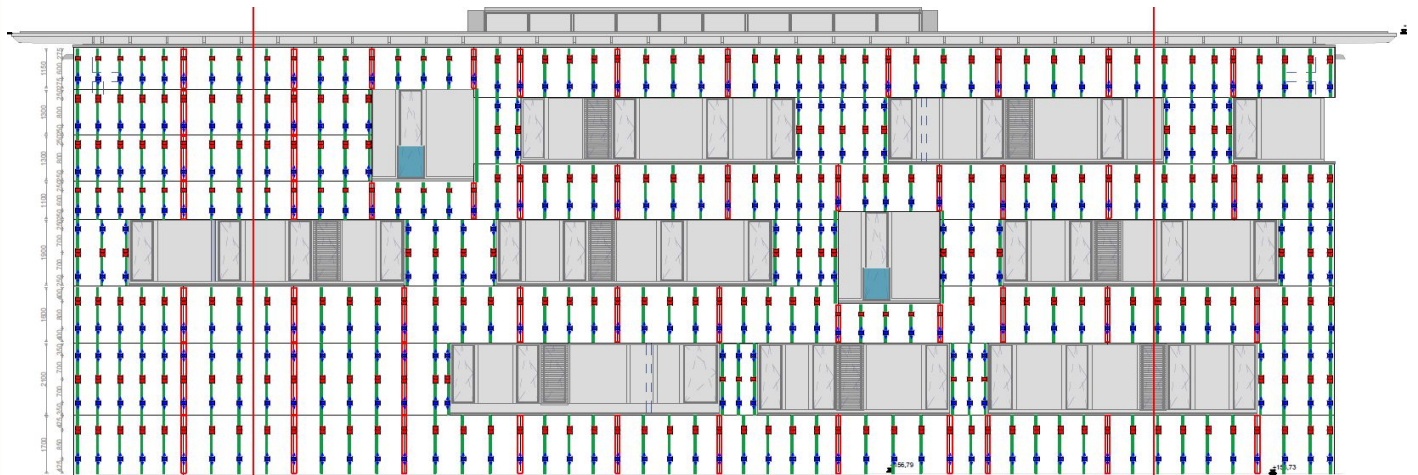


**Manufacturer** EJOT Austria GmbH & Co KG  
 Grazer Vorstadt 146, 8570 Voitsberg, Österreich  
 Tel.: +43 3142 27 600 76  
<http://www.ejot.at/>

Criteria validated based on reference facade	$\Delta_U$ [W/m <sup>2</sup> K]
<b>LC III</b>	<b>0.0118</b>
<b>LC V</b>	<b>0.0163</b>

In order to validate the suitability, the manufacturer provides a static calculation and an associated installation plan for the reference facade.

Loadclass / Facade-weight		Thermal bridge coefficient [W/K]		Quantity /m <sup>2</sup>	[W/m <sup>2</sup> K]	[W/(kNK)]
LC / Material	[kN/m <sup>2</sup> ]	X <sub>FP</sub>	X <sub>SP</sub>	FP/GP	$\Delta U$	Eff. fa
5 (6+18 cm)	0,30	0,0063	0,0063	2,90	0,0183	0,0610
5 (16 + 8 cm)	0,30	0,0056	0,0056	2,90	0,0163	0,0545



Installation-plan reference facade of the certified component (LC V)

Load-class (LC)	Facade cladding	Facade weight [kN/m <sup>2</sup> ]	Efficiency criterion fulfilled?
I	Aluminium laminated	0.10	yes
II	Plastic	0.15	yes
III	Fiber-cement plates	0.20	yes
IV	Acrylic glass	0.25	yes
V	Ceramics	0.30	yes
VI	Stone	0.55	not evaluated

The classification criteria and the load class allocation can be found in the current criteria "Zertifizierte Passivhaus Komponente – Fassadenanker, Version 2.1, 27.05.2021".